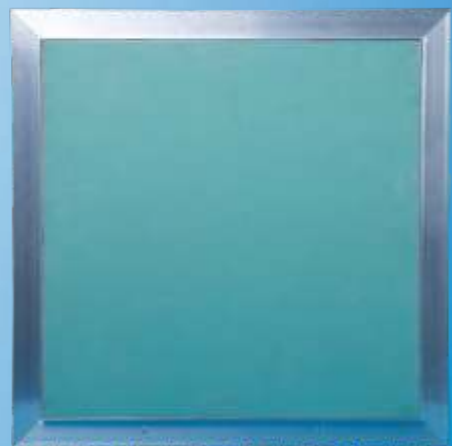


# Gypsum access grille **GAG**



# Gypsum access grille

## GAG

### Applications:

The gypsum access grille allows access to hidden plumbing elements (HVAC equipment, valves etc.), located in ceiling or walls, for current operation or repairs, without visibly affecting the architectural line of the surface where such elements are installed.

### Description:

The foldable (central) part of the gypsum access grille is made of aluminum profile, without visible frame, with humidity-resistant gypsum board panel (green), 12.5 mm thickness.

The fixed frame is installed behind the gypsum board panel of the wall or ceiling and it shall be fastened to their structure, allowing only the central panel to be folded, remaining suspended by the hinges and by the detachable safety system.

The lock system is click-clack type (closing/opening by successive pushes).

The rated sizes, set forth in the order, must be the sizes of the fixed frame, (of the cutout to be performed in wall / ceiling).

### Material:

- Fixed part: special profile, made of extruded aluminum, in RITECH design;
- Mobile part: special profile, made of extruded aluminum, with central panel made of gypsum board 12.5 mm.

### Finish:

Natural. The central panel shall be painted together with the wall or the ceiling where it is installed.

### Fastening:

Incorporated internal elements, to be fastened to the gypsum board.

### Packaging:

Individual packaging, in polyethylene foil and delivered in cardboard boxes. Corners are protected with cardboard guards.

### Technical specifications text-box, for price quotation requests:

Gypsum access grille, without visible frame, foldable panel made of green gypsum board, click-clack lock system, made of extruded aluminum;

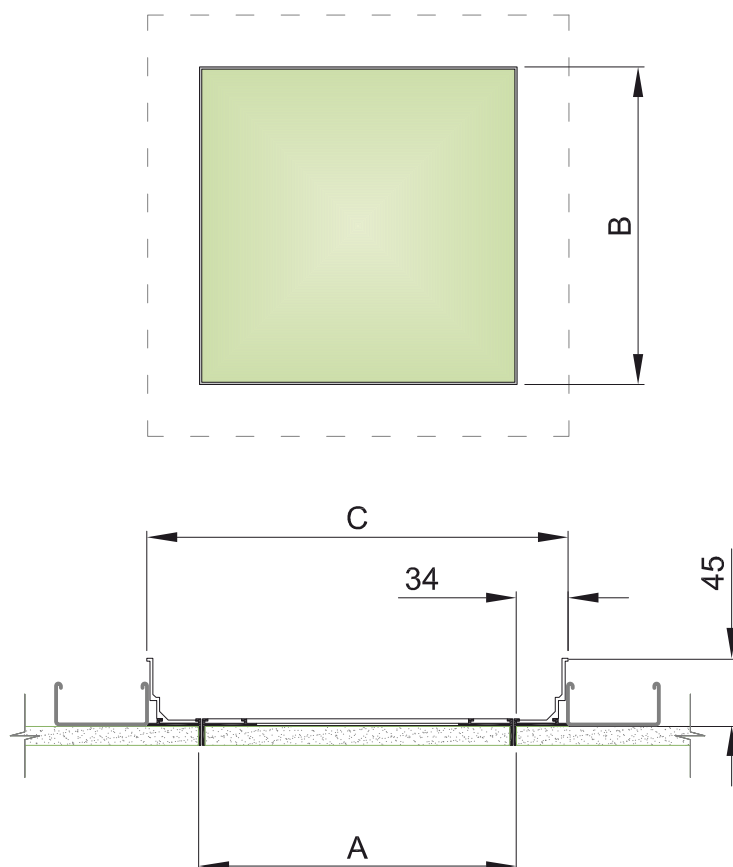
Color: Natural;

Sizes: ..... mm X ..... mm;

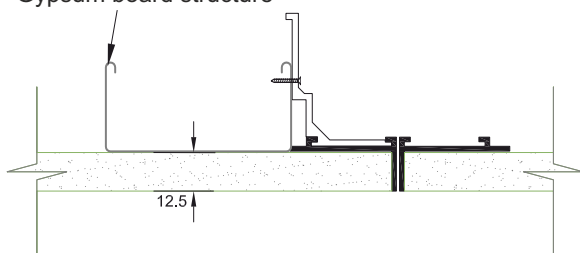
Type: RITECH GAG #####.



## Sizes



Gypsum board structure



Engineering tolerance  $\pm 2\text{mm}$

Technical data for several usual sizes

| A     | x | B     | Fastening element -C- |       | Surface           | Weight |
|-------|---|-------|-----------------------|-------|-------------------|--------|
| [mm]  |   | [mm]  | [mm]                  | [mm]  | [m <sup>2</sup> ] | [kg]   |
| 300   | x | 300   | 334                   | 334   | 0,09              | 1,36   |
| 400   | x | 400   | 434                   | 434   | 0,16              | 2,41   |
| 500   | x | 500   | 534                   | 534   | 0,25              | 3,77   |
| 600   | x | 400   | 634                   | 434   | 0,24              | 3,62   |
| 600   | x | 600   | 634                   | 634   | 0,36              | 5,43   |
| 800   | x | 800   | 834                   | 834   | 0,64              | 9,65   |
| 1.000 | x | 500   | 1.034                 | 534   | 0,50              | 7,54   |
| 1.000 | x | 1.000 | 1.034                 | 1.034 | 1,00              | 15,08  |

Example: Code GAG040040 represents:

**Gypsum access grille, with A = 400 mm, B = 400 mm**

**NOTE :** Products may be ordered in customized sizes and configurations (fastening method, hinge display, closing system etc.)



Design your environment