



Jet nozzles **RKHA**



www.ritech.ro

Jet nozzles

RKHA

Applications:

Jet nozzles are successfully used in high rooms with large volume, like theatre halls, cinema halls, commercial galleries and industrial hangars. They may provide high air flowrates at low sound pressure levels.

Description:

Jet nozzles may be installed both for vertical and horizontal supply of air. The pivoting capacity and the special design of the central mobile element allows concentration of air flow in any direction, at a 30° angle, with no effects on pressure loss or noise level.

For improved adjustment of the air flowrate, we recommend the use of circular dampers.

Material:

Aluminum.

Finish:

Electrostatically painted surface, dried in polymerization oven, providing increased lifetime of the paint layer and its pigment. Standard color: WHITE - RAL code 9016. On request, products may be delivered in any RAL color.

Fastening:

Pre-punched ø5 mm holes on exterior frame.

Packaging:

Individual packaging, in polyethylene foil and delivered in cardboard boxes.

Technical specifications text-box, for price quotation requests:

Jet nozzles, made of aluminum and painted with electrostatic coating;

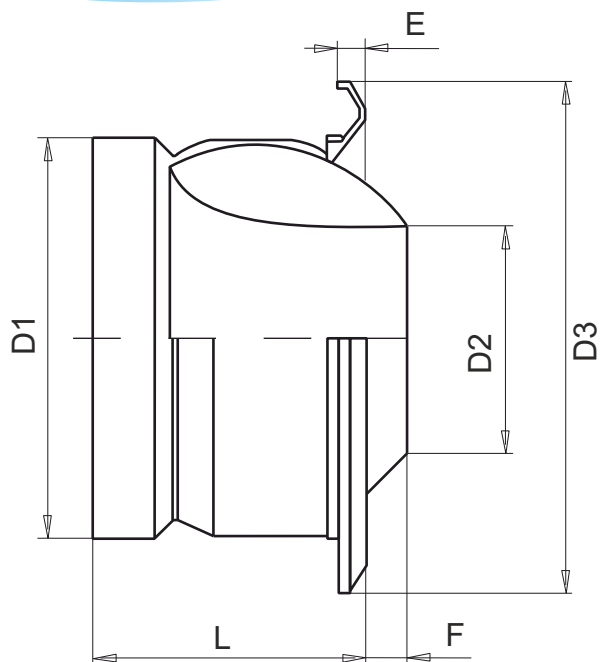
Color: RAL #####;

Connection sizes: mm;

Type: RITECH RKHA ###.



Performance table



$\varnothing D_1$	$\varnothing D_2$	$\varnothing D_3$	E	F	L
[mm]	[mm]	[mm]	[mm]	[mm]	[mm]
100	50	162	10	-2	78
125	64	185	10	4	89
160	82	216	11	10	106
200	108	273	16	14	127
250	136	318	16	23	159
315	174	400	23	29	189
400	230	483	24	47	223

Example: Code RKHA-200 represents:
Jet nozzle, with connection size
 $\varnothing D_1 = 200\text{mm}$

Engineering tolerance $\pm 2\text{mm}$

V	Sizes	Jet length					
		10m		20m		30m	
		Q	N_z	Q	N_z	Q	N_z
[m/s]	[mm]	[m ³ /h]	[dB(A)]	[m ³ /h]	[dB(A)]	[m ³ /h]	[dB(A)]
0,25	100	-	-	94	31	140	42
	125	-	-	122	27	180	37
	160	83	<20	166	<20	248	32
	200	104	<20	220	<20	306	26
	250	133	<20	274	<20	382	23
	315	180	<20	346	<20	540	21
	400	234	<20	464	<20	702	<20
0,50	100	94	31	187	50	-	-
	125	122	27	245	46	-	-
	160	166	<20	331	39	497	50
	200	220	<20	436	36	655	47
	250	274	<20	547	32	824	43
	315	353	<20	702	27	1.055	39
	400	464	<20	929	27	1.393	37
1,00	100	187	50	-	-	-	-
	125	245	46	-	-	-	-
	160	331	39	-	-	-	-
	200	436	36	871	49	-	-
	250	547	32	1.098	51	-	-
	315	702	27	1.404	47	2.106	53
	400	929	27	1.966	45	2.783	51

Legend:

Symbol	Description	M.U.
RKHA	Jet nozzle	
$\varnothing D_1$	Connection diameter	[mm]
$\varnothing D_2$	Diameter for air supply	[mm]
$\varnothing D_3$	Exterior frame diameter	[mm]
V	Air velocity through tube	[m/s]
N_z	Noise level (sound pressure)	[dB(A)]
Q	Air flow	[m ³ /h]



Design your environment